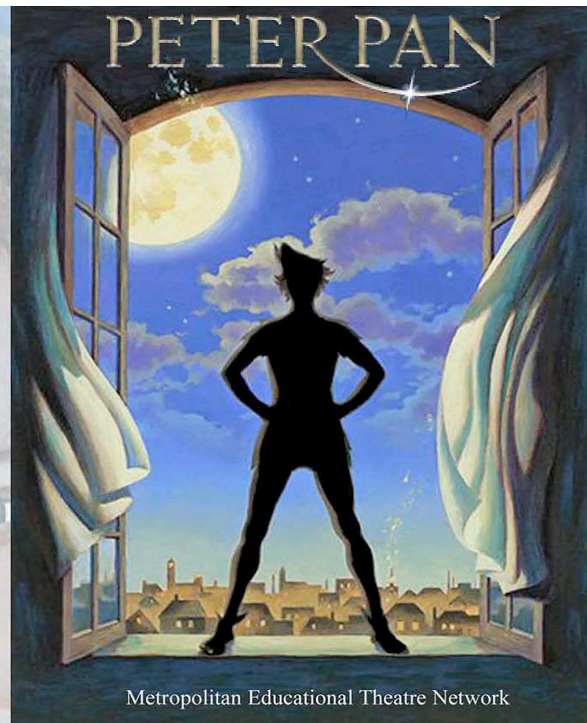


*Catch the Magic As Metropolitan Educational Theatre Network/ MET2  
Presents*

A Musical Based on  
the play by  
Sir J.M. Barrie  
Lyrics by Carolyn  
Leigh  
Additional Lyrics by  
Betty Comden  
and Adolph Green  
Music by Morris  
"Moose" Charlap  
Additional Music by  
Jule Styne



Join the adventures of Peter, Wendy, John, Michael, Lost  
Children, and Tiger Lily and her Indians, as they battle Pirates, a  
crocodile, and of course the villainous Captain Hook!  
A wonderful family show for all ages!

*Visual Flying Effects by ZFX*

**The Performing Arts Education Center**  
**on the campus of Calabasas High School**

22855 Mulholland Hwy, Calabasas, CA, 91302

**Friday, January 25, 2019 at 7:30 p.m.**

**Saturday, January 26, 2019 at 7:30 p.m.**

*(VIP Fundraising Reception at 6:00 p.m. and is included in ticket price.)*

**Sunday, January 27, 2019 at 2:00 p.m.**

**Tickets Available by email at LMC11384@aol.com or by calling (818) 892-2959**  
**Check us out at [www.MET2.org](http://www.MET2.org)**

*Gold and Silver seating available ~ All seating is assigned*  
*Most credit cards accepted. No refunds. Exchanges only if tickets are available.*

**The true educational theatre company designed and directed by educators.**

Peter Pan is presented through special arrangement with Music Theatre International (MTI).  
All authorized performance materials are also supplied by MTI. [www.MTIShows.com](http://www.MTIShows.com)

